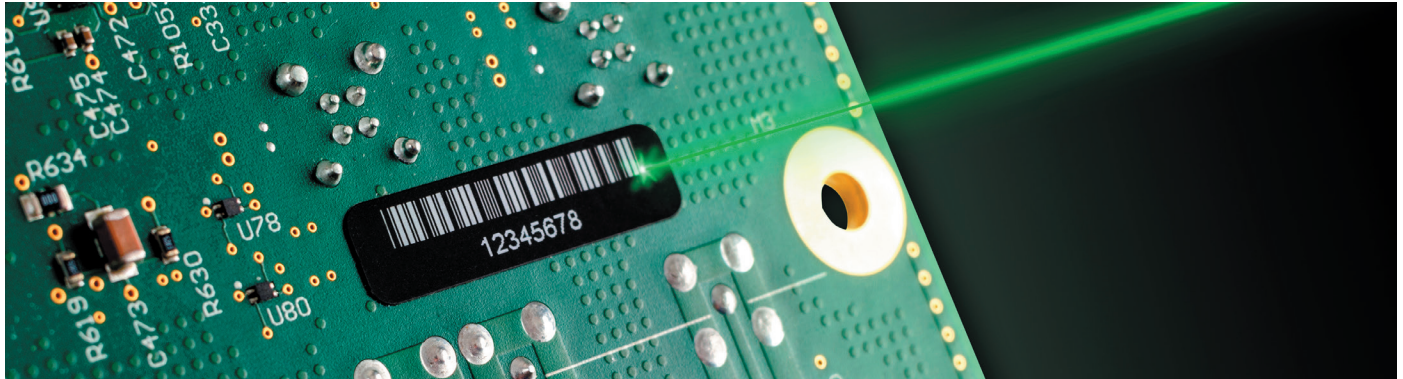


# High Performance for Harsh Conditions

## Custom Laser Engravable Traceability Labels



When it comes to traceability, your ability to track your manufacturing process is only as good as your label. Keep your products identified in even the harshest conditions with Custom Laser Engravable Traceability Labels.

The subtractive marking process of laser markable labels enables them to survive harsh conditions, including high temperatures, extreme abrasion, and repeated harsh aqueous cleaning cycles. Small labels for electrical component boards are no problem — the resolution is so precise it can reach up to 1200 dpi and is limited only by the quality of the laser. And to fit your custom needs, the labels are engineered to order so you get the correct size for your application. Other features include:

- Wave soldering resistance up to 572° F (300° C)
- Ready to ship in two weeks or less
- Compatibility with most IR laser-marking systems
- Optional ESD prevention layers
- More efficient and cost effective than direct laser marking on boards



### Laser-markable materials include:

**B-420:** White matte laser-markable polyester

**B-421:** Black matte laser-markable polyester

**B-730:** Black matte laser-markable polyimide

**B-731:** Black matte ESD laser-markable polyimide

**B-732A:** White gloss laser-markable polyimide

**B-733A:** White gloss ESD laser-markable polyimide

**B-734:** White matte laser-markable polyimide

**B-735:** White matte ESD laser-markable polyimide